

1

2

3

4

5

6

A

B

C

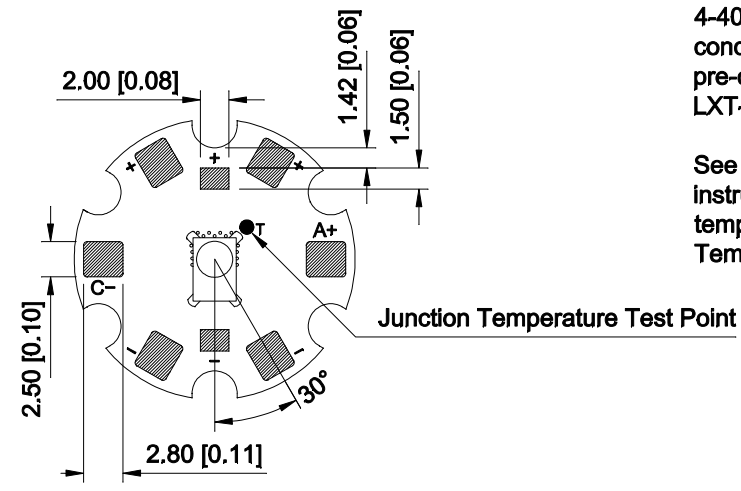
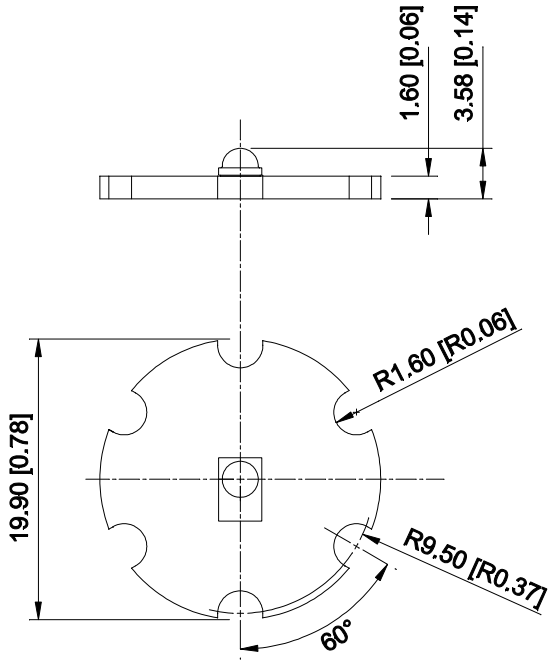
D

A

B

C

D



PADS & MARKINGS

Notes:

Thermally conductive base constructed from FR4 laminate with 2 oz copper, white solder mask and black markings.

Assembly must be mounted to a suitable heat sink with mechanical fasteners (E.g., 4-40 screws) and/or a thermally conductive interface material such as our pre-cut thermal adhesive tape. (Part LXT-S-12).

See technical documentation for instructions for determining LED junction temperature using the Junction Temperature Test Point.

QTY	DESCRIPTION
1	SR-01 CoolBase FR4 PCB
1	Lumileds Rebel LED

SCALE	2:1	NAME	DATE
UNITS	MM [INCHES]	DRAWN	RW Mar 1/12
TOLERANCE		CHECKED	WW Mar 1/12
SOLDER	Keester EM828	RELEASED	Mar 19/12
REFLOW PROFILE		COMMENTS:	
QTY PER PANEL			
DEPANELIZED			
Above values unless otherwise noted			
DO NOT SCALE DRAWING			

Quadica Developments Inc.

PROJECT  
SR-01 Rebel Star LED Assembly

Luxeon Star LEDs

DWG: SR-01-Assembly.dwg	PART: SR-01-XX	REV: H
PROJECT ID:	SHEET 1 OF 1	

1

2

3

4

5

A4