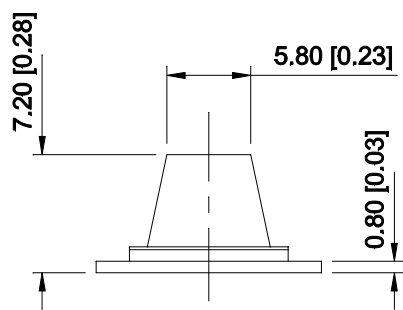


1 2 3 4 5 6

A

A

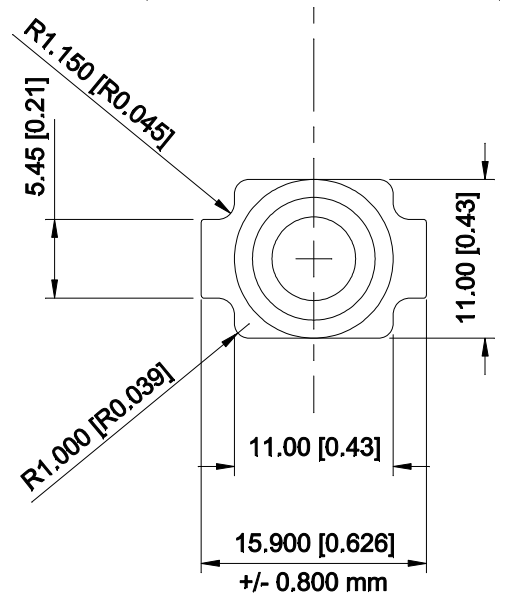


Notes:
 Thermally conductive base constructed from FR4 laminate with 2 oz copper, white solder mask and black markings.

 Lens is fastened to the base using Loctite 460 adhesive.

B

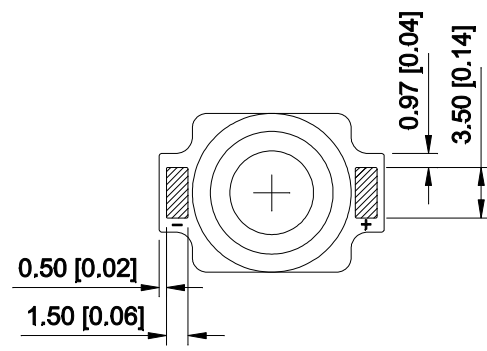
B



Assembly must be mounted to a suitable heat sink with a thermally conductive interface material such as our pre-cut thermal adhesive tape. (Part LXT-SR04-10).

C

C



PADS & MARKINGS

QTY	DESCRIPTION
1	SR-04 CoolBase FR4 PCB
1	Lumileds Rebel LED
1	Fraen F360L-3-RE-0S side emitting lens

D

D

SCALE	2:1	NAME	DATE
UNITS	MM [INCHES]	DRAWN	RW Apr 12/12
TOLERANCE		CHECKED	WW Apr 12/12
SOLDER	Kester EM828	RELEASED	May 30/12
REFLOW PROFILE		COMMENTS:	
QTY PER PANEL			
DEPANELIZED			
Above values unless otherwise noted			
DO NOT SCALE DRAWING			

Quadica Developments Inc.

PROJECT
Rebel Side Emitter LED Assembly

Luxeon Star LEDs

DWG: sr-04.dwg	PART: SR-04-XX	REV: C
PROJECT ID:		SHEET 1 OF 1

1 2 3 4 5 6 A4