

1

2

3

4

5

6

A

B

C

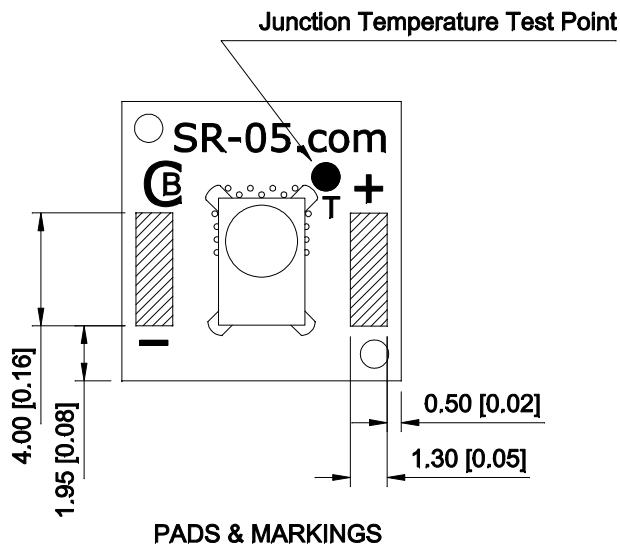
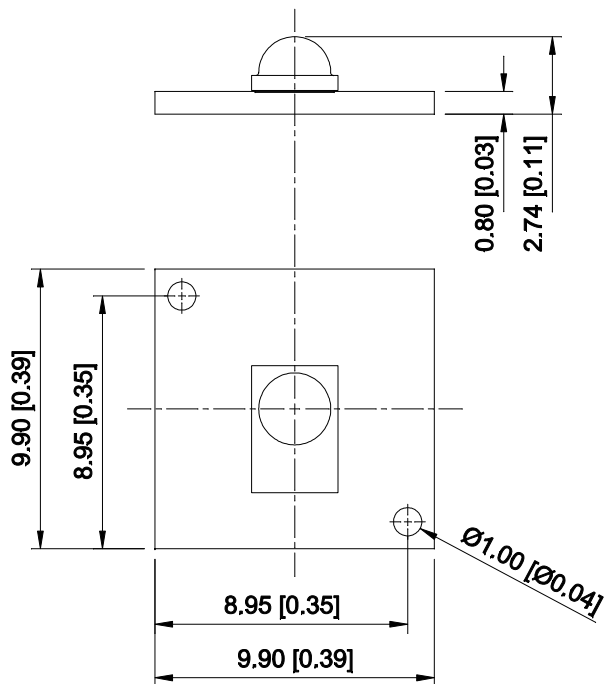
D

A

B

C

D



PADS &amp; MARKINGS

**Notes:**

Thermally conductive base constructed from FR4 laminate with 2 oz copper, white solder mask and black markings.

Assembly must be mounted to a suitable heat sink with a thermally conductive interface material such as our pre-cut thermal adhesive tape. (Part LXT-R-10)

See the technical documentation for instructions for determining LED junction temperature using the Junction Temperature Test Point.

QTY	DESCRIPTION
1	SR-01 CoolBase FR4 PCB
1	Lumileds Rebel LED
<b>Quadica Developments Inc.</b>	
PROJECT	
<i>SR-05 Rebel</i> <i>10mm Square LED Assembly</i>	
<b>Luxeon Star LEDs</b>	
DWG: SR-05-Assembly.dwg PART: SR-05-XX REV: C	
PROJECT ID:	SHEET 1 OF 1

SCALE	4:1	NAME	DATE
UNITS	MM [INCHES]	DRAWN	RW Mar 1/12
TOLERANCE		CHECKED	WW Mar 1/12
SOLDER	Kester EM828	RELEASED	Mar 19/12
REFLOW PROFILE			
QTY PER PANEL		COMMENTS:	
DEPANELIZED			
Above values unless otherwise noted			
DO NOT SCALE DRAWING			

1

2

3

4

5

A4