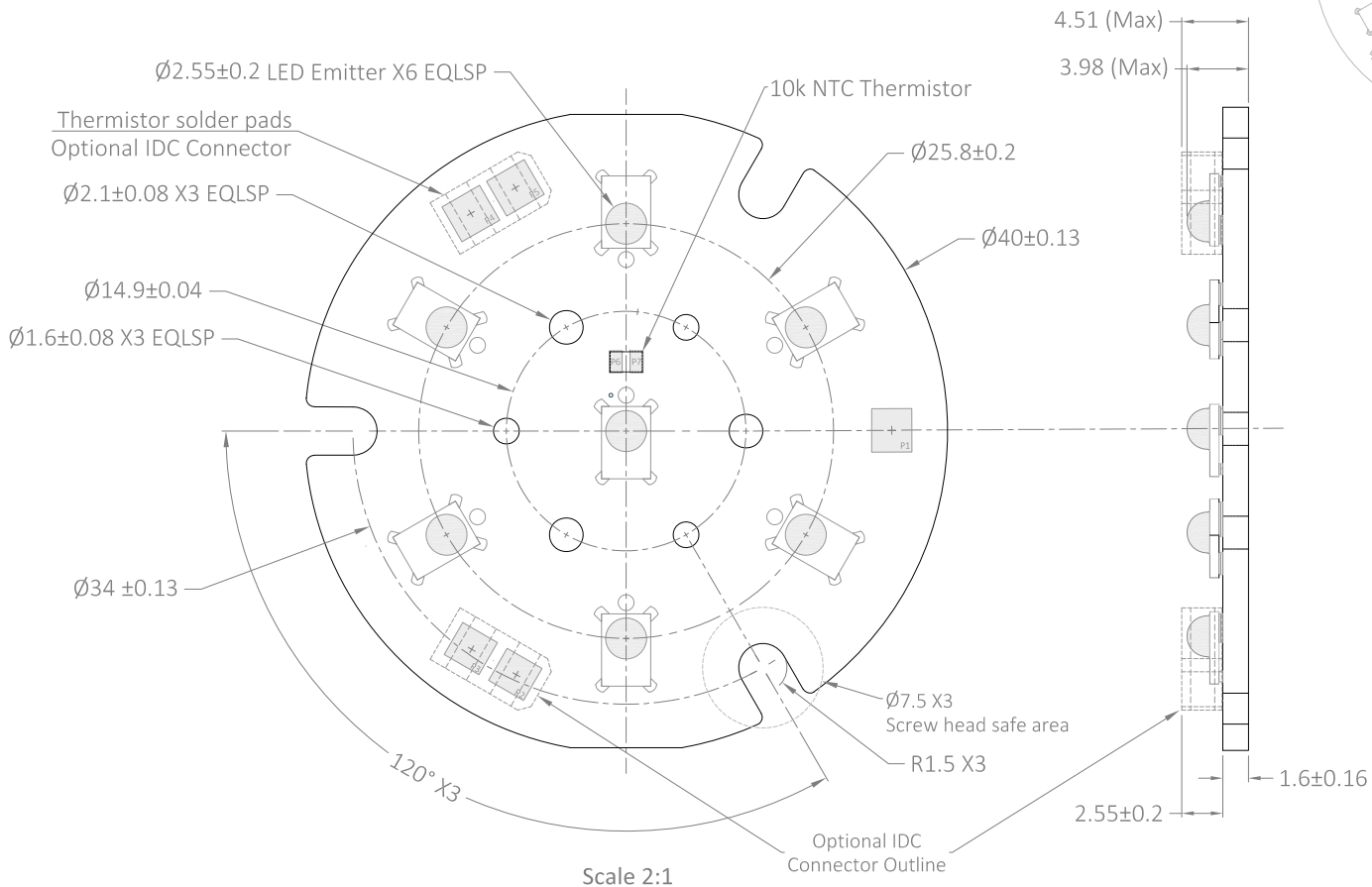
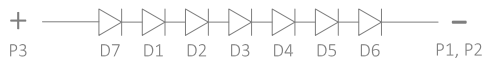
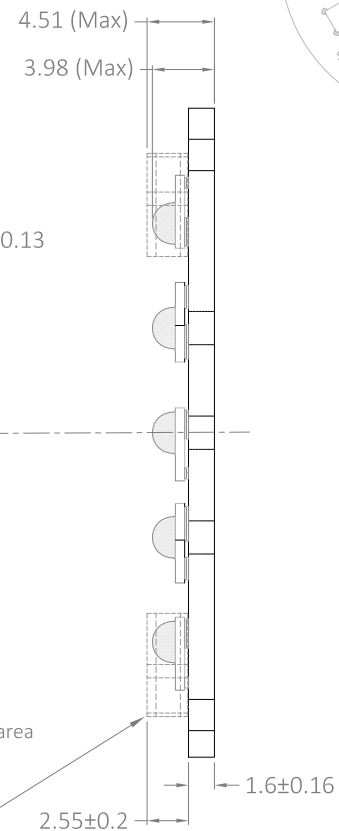


This SABER² LED module features COFAN USA's Pillar technology for a direct thermal path from the LED to the heatsink



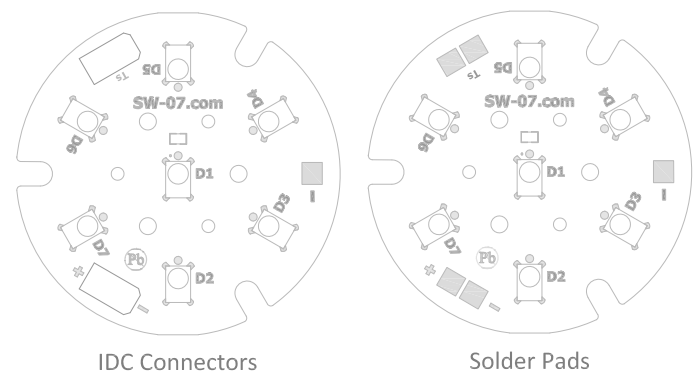
| Solder Pad Locations (Note 7) | | | | |
|-------------------------------|-------|-------|-----------|-----------|
| Pad ID | X Loc | Y Loc | Size | Rotation* |
| P1 | 33.0 | 0.0 | 2.7 x 2.5 | 0° |
| P2 | -13.8 | -30.3 | 2.7 x 2.5 | 30° |
| P3 | -19.3 | -27.0 | 2.7 x 2.5 | 30° |
| P4 | -19.3 | 27.0 | 2.7 x 2.5 | 30° |
| P5 | -13.8 | 30.2 | 2.7 x 2.5 | 30° |
| P6 | -1.3 | 8.6 | 2.7 x 1.6 | 0° |
| P7 | 1.3 | 8.6 | 2.7 x 1.6 | 0° |

* Rotation angle around center point of pad.



Connection Schematic (Note 8)

| REVISIONS | | | |
|-----------|--|----|-----------|
| REV | DESCRIPTION | BY | DATE |
| B | Added 3 outer positioning slots | CW | Feb 25/23 |
| B | Added thermistor sensor and optional connector | CW | Feb 25/23 |
| B | Repositioned power connectors to accommodate positioning slots | CW | Feb 25/23 |



PCB Pads & Markings 1:1

- NOTES:**
1. Base is a COFAN USA Pillar aluminum MCPCB with white soldermask and gold & black markings.
 2. Bottom of the MCPCB base is uncoated and electrically neutral.
 3. Solder pads are ENIG plated.
 4. The LED module must be mounted to a suitable heat sink with a thermally conductive interface material such as our pre-cut thermal adhesive tape. (Part LXT-SR02-03)
 5. Thermally conductive double sided tape or epoxy is recommended for fastening the LED module to the cooling surface. Mechanical fasteners not generally recommended. See the SW-07 datasheet for additional details.
 6. See the datasheet for instructions for determining LED junction temperature.
 7. Solder pad locations are relative from the center of the module to the center of the solder pad.
 8. See the datasheet for additional wiring connection details.

| QTY | DESCRIPTION |
|-----|--|
| 1 | SW-07 COFAN USA Pillar Aluminum MCPCB |
| 7 | LUXEON Rebel LED |
| 1 | Vichay NTH50805N02N1002JE 10k NTC Thermistor |
| 2 | AVX 00-9176-002-8X3-906 2 Pos IDC Connector (Optional) |

Luxeon Star LEDs
service@luxeonstar.com / www.luxeonstar.com

PROJECT
SW-07 SABER²
Series Connected 7-Up Round Rebel LED Module

Quadica Developments Inc.

PART: SW-07-XX

| | | | | | | |
|-----------|----------|---------------|----|-----------|----------------|------------|
| SCALE | As noted | DRAWN | RW | Jul 28/22 | SOLDER PASTE | AIM NC-258 |
| UNITS | MM | CHECKED | CW | Jul 31/22 | REFLOW PROFILE | Standard |
| TOLERANCE | As noted | ISSUED/UPDATE | CW | Feb 25/23 | QTY PER ARRAY | 6 |

