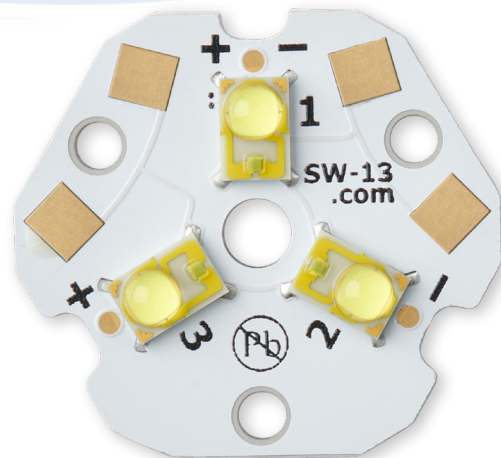


The SABER² SW-13 high power LED modules features three series connected¹ Rebel LEDs soldered to a 21 mm x 1.6 mm thick, COFAN Super Pillar aluminum board for optimal heat dissipation. This patented technology significantly lowers the LED junction temperature, enhancing LED longevity, brightness, and reliability.

Wire connections to the module can be made using optional AVX 9176-800 series solderless IDC connectors or soldered using standard bench-top soldering tools. The IDC connectors are 100% compatible with the Carclo 105 series of secondary optics.

The perimeter of this LED module is nearly identical to any standard Star LED module. Three small notches equally spaced around the edge of the module allow connecting wires to be routed along the side of the module to fit into restrictive locations.



SPECIFICATIONS	Base Type	1.6 mm COFAN USA Pillar Aluminum
	Thermal Performance ² $R\theta_{C-B}$	0.39 °C/W
	Pad Finish	Immersion Gold, ENIG
	Solder Mask Color	White
	Solder Paste	AIM NC258-M8 Lead-Free, No-Clean
	Max Operating Temperature ³	120°C
	Overall Dimensions (mm)	21.5d x 3.98h (max height without IDC connectors)
	Optional Connectors	AVX 9176-800 Low Profile IDC (22, 24 or 26AWG)
	Weight	1.5g

FEATURES

COFAN USA Pillar direct thermal path technology

Optional, one-step IDC connections that are compatible with most secondary optics and do not require special installation tools

Available with your choice of any Rebel LED currently produced by Lumileds.

Available with binned LEDs⁴

RoHS/REACH compliant

PB free

No minimum order requirements

BENEFITS

High-performance Pillar technology minimizes cooling requirements, increases lumens output and extends LED life

AVX IDC connectors make the creation of robust wire-to-board connections a simple one-step process

Production quantity binning provides consistent color and brightness

Cost-effective design delivers a low-cost option in both small and large quantities

No minimum order requirement means fast, low-cost prototyping

- Specialty lighting
- Microscope illumination
- Inspection lighting
- Flashlights
- Task Lamps
- Spot lighting
- Recreational lighting (dive lights, bicycle lights, light sabers, etc.)
- Fiber optic illuminators

APPLICATIONS

1. Addressible & color mixing versions of this LED module are also available. See page 9 for more details.
 2. See the thermal model on page 8.
 3. For maximum life, the board temperature must be kept below this value.
 4. Minimum order quantities apply.

WIRE CONNECTIONS

Connecting wires can be hand-soldered directly to the module or pressed into place using two optional, low-profile [AVX 9176-800](#) IDC wire-to-board connectors.

These industrial-grade connectors include an integrated cap that precisely holds and guides the wire while it is pressed into the contact, creating a gas-tight, cold-welded connection. The connectors are designed for single use. Wires cannot be removed after they are pressed into place.

Connectors for 22, 24, or 26 AWG solid or stranded wire can be specified when the module is ordered. The connector can accommodate a maximum wire insulation diameter of 1.40 mm.

When the wire is pressed into place, the overall height of the connector is 2.55 mm, which minimizes interference with the light output of the LED and allows it to be used with many secondary optic holders.

To use IDC connectors, insert the wire into the cap so that the wire extends beyond the face of the connector to help position the punch-down tool. (Image 3) Wires do not need to be stripped.

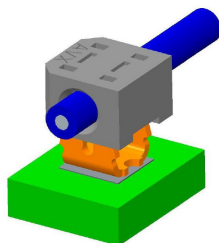


Image 3

Ensure that the LED module is firmly supported on a solid, flat surface. Using the supplied press-down tool¹ (image 2) with a multi-bit driver, press the cap down until it reaches the stop. When pressed into place, the gap between the bottom of the cap and the PCB should not be greater than 0.05 mm. (Image 5)



Image 2

The insertion force will be approximately 80N (18 lbf) depending on the wire gauge, conductor strands, and insulation material.

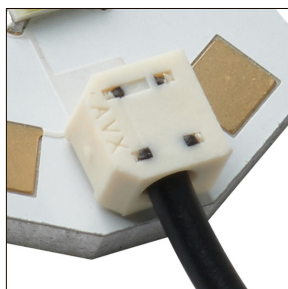


Image 4

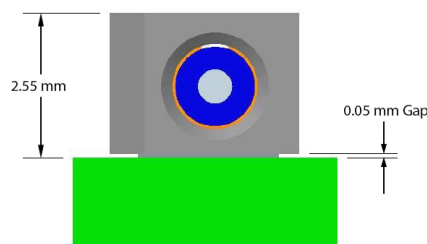


Image 5

Always ensure that the bottom of the LED module is firmly supported on a flat surface while pressing the wire into place.

1. While any flat-surfaced tool can be used to press the wire cap into place, the press down tool that we supply ensures that the tool does not accidentally slip off the top of the cap, potentially damaging the LED.

WIRE CONNECTIONS

The same pads are used for hand soldered connections or the optional AVX IDC connectors.

PAD No	LED Connection
1	Anode
2	Anode
3	Cathode
4	Cathode

Outline of IDC connector

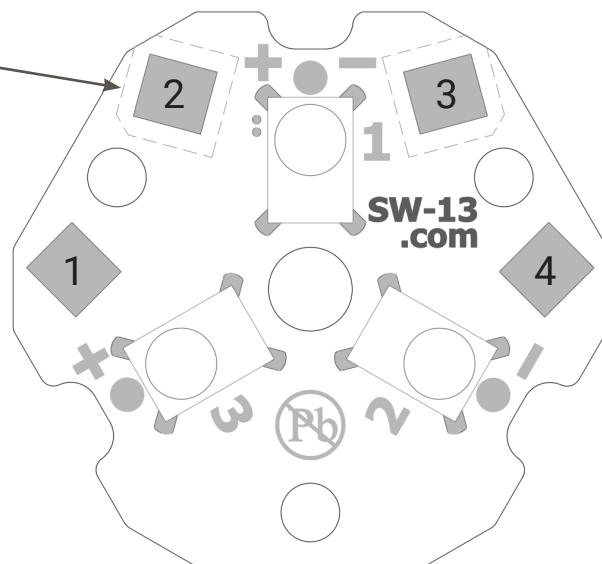


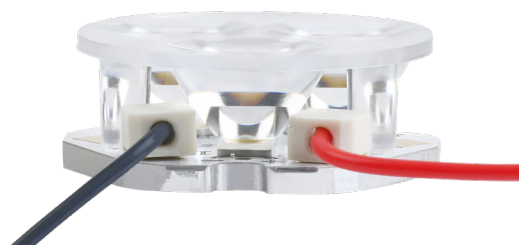
Image 7

SECONDARY OPTICS

The SABER² SW-13 has been designed to accommodate the following optics.

Manufacturer	Part / Part Series	Part Type	IDC Compatible
Carclo	105	Optic with Legs	Yes
Ledil	C11916_SATU-S	Optic with Legs	No

More information about all of these optics is available on our website at luxeonstar.com/optics.



SW-13 Module With Wire Connections & Mounted Carclo Optic

MOUNTING & COOLING

The SW-13 LED module requires careful attention to mounting and cooling to ensure that the LED junction temperatures are kept well below the maximum rating as specified in the LED documentation published by Lumileds.

For optimal cooling, the LED module needs to be mounted to a suitable finned heat sink (aluminum or copper) that is exposed to open air. The LED module can be fastened to the heat sink in one of two ways:

- [Pressure sensitive, thermally conductive tape](#)
- [Thermally conductive adhesive](#)

Always ensure that the module is being adequately cooled by testing the LED junction temperature using the method described in Measuring LED Junction Temperature section on page 6 of this document.

Mechanical fasteners are not recommended.

BASE CONDUCTIVITY

The bottom of the LED module is electrically neutral, so it is not necessary to electrically isolate the base from the cooling surface.



Bottom View

MOUNTING USING PRESSURE SENSITIVE THERMAL TAPE

Pressure-sensitive thermal tape such as [Bond-Ply[®] 100](#) makes it easy to fasten the base directly to a heat sink without the need for screws, clip mounts, or fasteners. However, to ensure a sound thermal bond, it is essential that the tape is used correctly. This includes:

- Ensuring that all mating surfaces are clean, totally flat, and free of voids
- Sizing and positioning the tape so that all mating surfaces are covered
- Applying a minimum of 10 PSI of even pressure between the LED and heat sink for at least 30 seconds

Applying even pressure to bond the LED module to the heat sink can be difficult due to the small size of the module and the need to avoid touching or applying any pressure to the LED optic. To overcome this problem, we include an [assembly press tool](#) (image 8) with our pre-cut thermal tape. This press has been designed to apply even, constant pressure to the module and heat sink without touching the LED itself. A video that demonstrates how to apply pressure-sensitive thermal tape and use a thermal press is available at luxeonstar.com/using-thermal-tape.

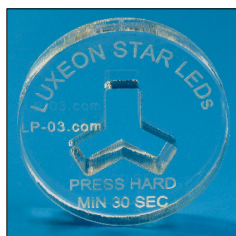


image 8

If pressure sensitive thermal tape is applied correctly, there is no need to use additional mechanical fasteners.

MOUNTING USING THERMALLY CONDUCTIVE ADHESIVE

Thermally conductive adhesive such as [Arctic Silver™](#) requires more effort to use than thermal tape but offers a permanent bond, wider operating temperature range, and higher reliability, especially in environments where the module will be subjected to mechanical shock and vibration.

To create a thermally efficient and reliable bond:

- Ensure that all mating surfaces are clean and free of any grease or oil
- Use just enough epoxy to create as thin a bond line as possible
- Apply as much pressure as possible between the LED and heat sink for at least 30 seconds, and then maintain pressure using a clamp or weight until the epoxy has set

Like our thermal tape, we include a thermal press with every order of Arctic Silver Thermal Adhesive to make it easier to create a sound bond. A video that demonstrates how to properly use the Arctic Silver Thermal Adhesive and a thermal press is available at luxeonstar.com/using-arctic-silver.

MECHANICAL FASTENERS WITH THERMAL PASTE

Mechanical fasteners and thermal paste are not recommended for SABER² SW-13 LED modules.

POWER DRIVERS

The choice of power driver will depend on the Rebel LED that is mounted to the base, the desired lumens output, the number of LEDs being powered, the input voltage source, and the drive current. For help with selecting and using LED power drivers, visit our online support center at luxeonstar.com/powering-leds.

We offer a complete selection of compatible current regulating drivers on our website at luxeonstar.com/drivers.

MEASURING THE LED JUNCTION TEMPERATURE

The following steps describes how to determine the junction temperature of the LED to ensure it is adequately cooled.

REQUIRED TOOLS

- Digital Multimeter
- Temperature measurement meter
- Thermocouple or thermistor with Kapton tape and/or thermal adhesive epoxy

TEST PROCEDURE

1. Enter the LED Typical Thermal Resistance Junction to Thermal Pad ($^{\circ}\text{C}/\text{W}$) $R\theta_{J-C}$ value from the Rebel LED datasheet into box **B** of the formula on page 7 of this document.
2. Ideally, the temperature should be tested with the LED module mounted in the location where it will be operated.

If the module's location is difficult to reach, then a thermocouple or thermistor will need to be attached to the module using Kapton tape or [Arctic Silver](#)™ thermal adhesive epoxy so that the tip of the sensor is in direct contact with the temperature measurement point as shown in images 9 & 10. Be sure to allow the adhesive to cure before testing.

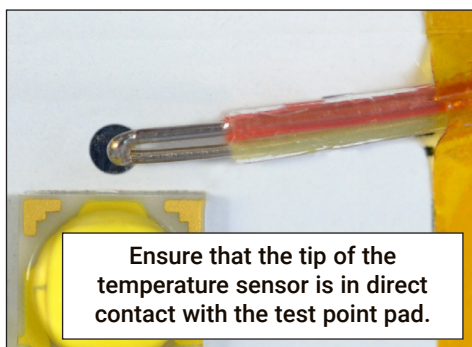


Image 9

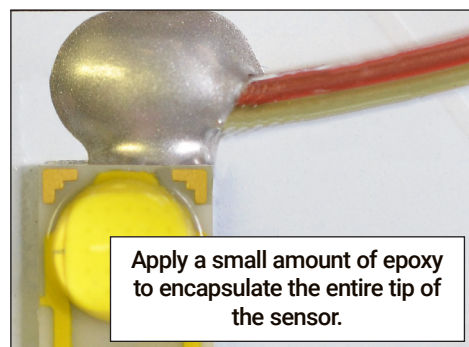


Image 10

3. After the temperature measurement has stabilized, note the test point temperature and enter it in box **A** on page 7.
4. Measure the forward voltage of the LED while at the stabilized temperature (Image 11) and note it in box **C**.
5. Enter the current, that the LED will be powered at in box **D**.
6. Evaluate the completed formula to determine the junction temperature of the LED.
7. If the same LED is mounted in each position of the module, and if you are powering all three LEDs in series with the module mounted in the center of a symmetrically shaped heat sink in open air, then it is only necessary to test a single LED to determine the junction temperature of all the LEDs. For all other operating configurations, you need to separately test each LED to ensure that the junction temperature is below its safe operating point.

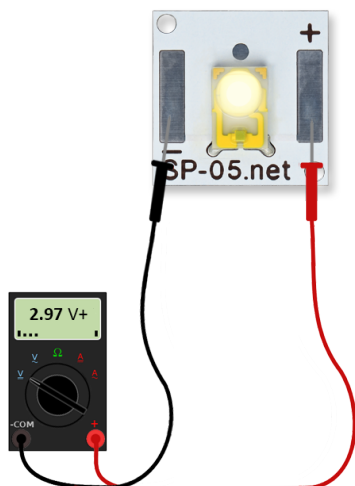


Image 11

$$\boxed{A} + (0.5 + \boxed{B}) \times (\boxed{C} \times \boxed{D}) = \boxed{}^*$$

Test Point T_c $R\theta_{C-S}$ $R\theta_{J-C}$ LED Forward Voltage V_f LED Forward Current I_f LED Junction Temperature $^{\circ}\text{C}$

More information about this junction measurement technique can be found in the [LUXEON LED Thermal Measurement Application Brief](#) (AB33) published by Lumileds.

Failure to ensure that the LED junction temperature is kept below its maximum temperature rating will result in poor color rendering, early degradation of light output, and premature LED failure.

* For maximum LED life, color stability, and reliability, the calculated junction temperature must always be below the maximum LED junction temperature published in the Lumileds datasheet for Rebel LEDs.

THERMAL MODEL

Image 12 is a cross-section of a typical SABER² LED module that illustrates how each LED is attached to the base and shows the thermal paths between the LED junction, temperature test point and bottom of the LED module.

- $R\theta_{J-C}$ is the thermal resistance from the LED junction (T_J) to the LED thermal pad
- $R\theta_{C-S}$ is the thermal resistance from the LED thermal pad to the temperature test point (T_C)
- $R\theta_{C-B}$ is the thermal resistance from the LED thermal pad to the bottom of the module

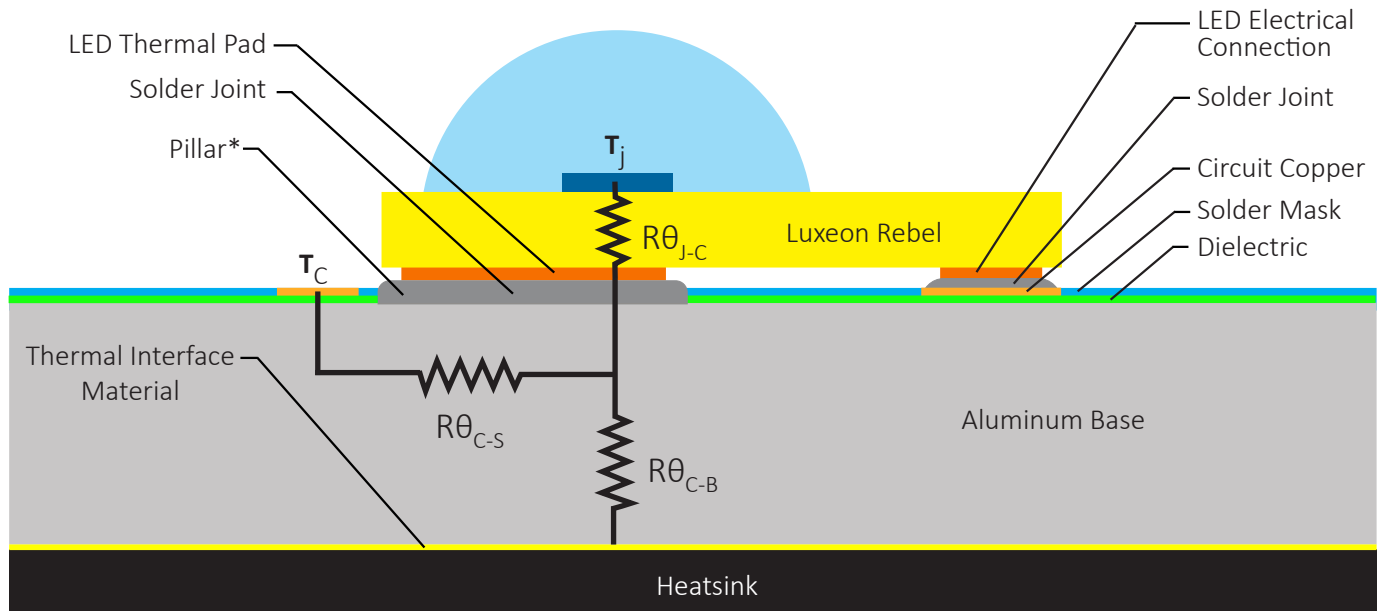
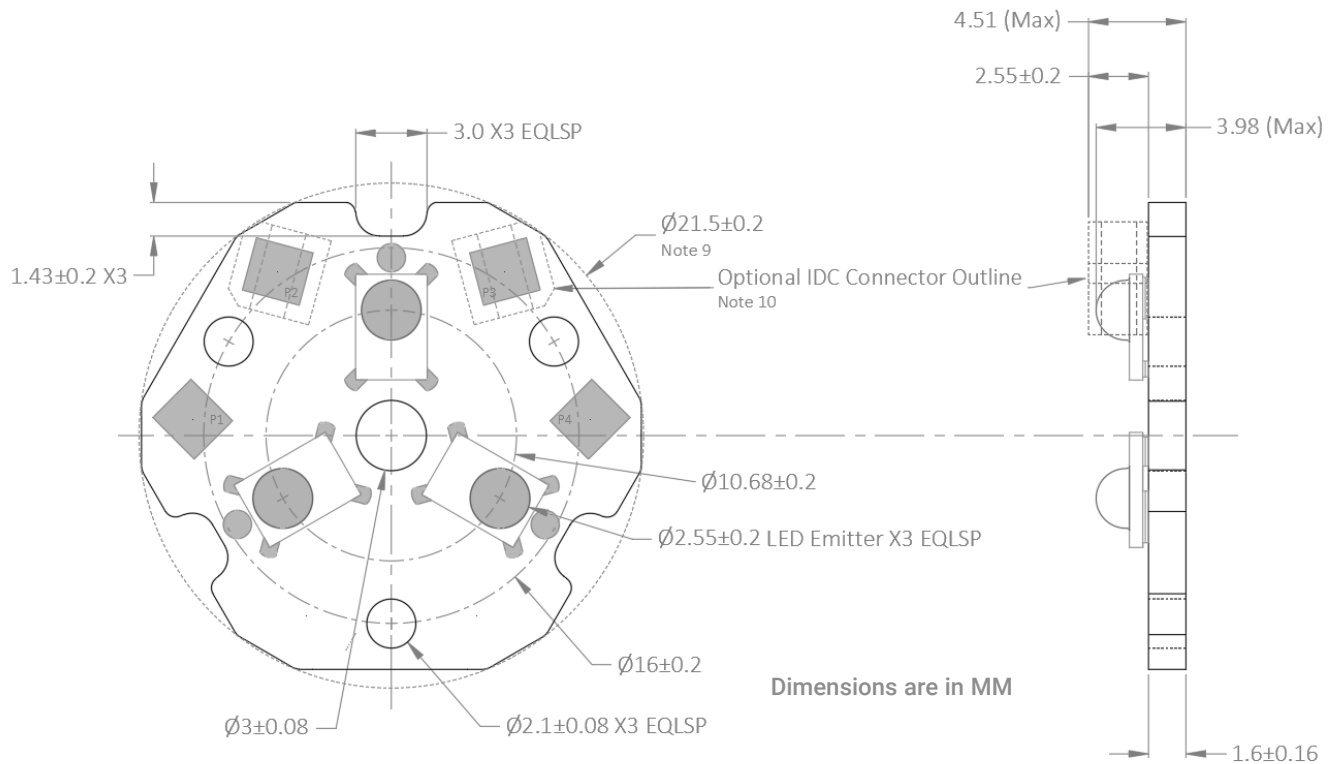


Image 12

* PILLAR

Pillar technology eliminates the dielectric layer and provides a solderable surface on the aluminum base, removing a significant barrier of thermal resistance between the LED and heatsink.

MECHANICAL DIMENSIONS



2D Drawing Download: luxeonstar.com/sw-13-drawing.pdf

3D Model Download: luxeonstar.com/sw-13.step

ALTERNATE VERSIONS

Addressable

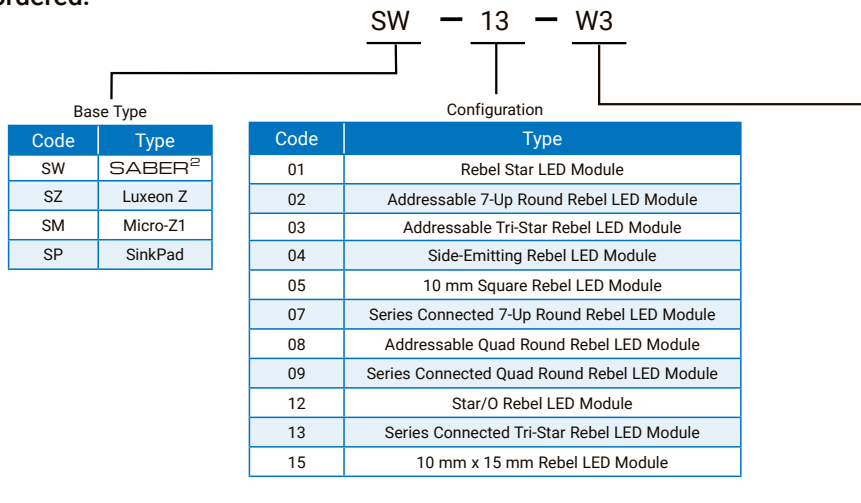
A version of this tri-star LED module is available where the LEDs are separately addressable with parallel connections to each LED. For more details go to luxeonstar.com/sw-03.

Color Mixer

An addressable version of this module can be ordered with different color LEDs mounted in each position. For more details, and to order go to luxeonstar.com/sw-03-mixer.

ORDERING INFORMATION

The SW-13 LED module can be ordered directly from luxeonstar.com/sw-13. There is no minimum order requirement, and shipping is available to anywhere in the World. Optional IDC connectors are specified when the module is ordered.



Color	Color Temperature (K) or Wavelength (nm)	Rebel LED Part Number	Production Code ²
Cool White	6500K	LXML-PWC1-0100	W3
Cool White	6500K	LXML-PWC1-0120	W4
Cool White	5650K	LXML-PWC2	W5
ANSI White	5000K	LX18-P150-3	T9
Neutral White	4100K	LXML-PWN1-0100	N2
Neutral White	4100K	LXML-PWN1-0120	N3
Neutral White	4100K	LXML-PWN2	N4
ANSI White	4000K	LX18-P140-3	T7
ANSI White	3500K	LX18-P135-3	T5
ANSI White	3000K	LX18-P130-3	T3
ANSI White	2700K	LX18-P127-3	T1
Far Red	720nm	LXML-PF01	D4
Deep Red	655nm	LXM3-PD01	D2
Red	627nm	LXM2-PD01-0040	R4
Red	627nm	LXM2-PD01-0050	R5
Red	627nm	LXM2-PD01-0060	D8
Red	627nm	LXM5-PD01	D9
Red	627nm	LXML-PD01-0040	R2
Red-Orange	617nm	LXM2-PH01-0060	E3
Red-Orange	617nm	LXM2-PH01-0070	E4
Red-Orange	617nm	LXM5-PH01	E6
Red-Orange	617nm	LXML-PH01-0050	E2
PC Amber	591nm	LXM2-PL01-0000	A5
Amber	590nm	LXM5-PL01	A8
Amber	590nm	LXML-PL01-0040	A2
Lime	567nm	LXML-PX02-0000	L1
Green	530nm	LXML-PM01-0090	G3
Green	530nm	LXML-PM01-0100	G4
Cyan	505nm	LXML-PE01-0070	C2
Blue	470nm	LXML-PB01-0030	B3
Blue	470nm	LXML-PB01-0040	B4
Royal-Blue	448nm	LXML-PR01-0500	V2
Royal-Blue	448nm	LXML-PR02-A900	V4

2. Do not confuse our production code with the LED bin code. They are not related.

COMPLIANCE:

Current compliance documents (e.g., RoHS, REACH, CMRT, etc.) are available for download from each product page on the luxeonstar.com website.

SAFETY:

The LED mounted onto this module will produce a highly intense point of light. Do not stare directly at the LED for any length of time.

RESTRICTED USE:

Products produced or sold by Quadica Developments Inc. are not certified for use as critical components in life support devices, systems, nor in medical operating rooms or life rescue equipment. A critical component is any component of a life support device, system or medical/rescue equipment whose failure to perform can be reasonably expected to cause failure or malfunction of the life support device, system, or medical operating room/life rescue equipment.

DISCLAIMER:

Although QUADICA DEVELOPMENTS INC. has attempted to provide the most accurate information and services data (hereinafter "Data"), the Data is provided "as is" and may contain errors. The entire risk of use of the data shall be with the user. QUADICA DEVELOPMENTS INC. makes no warranty, express or implied, including, but not limited to, the implied warranties of merchantability and fitness for a particular purpose regarding the contents or correctness of the Data provided or the ability of the Data to meet the user's needs or expectations. QUADICA DEVELOPMENTS INC. reserves the right to make changes and corrections without notice.

You, as the user, agree to this disclaimer and the user agreement with the download or use of the provided Data. In no event shall QUADICA DEVELOPMENTS INC. be liable for any direct, indirect, special, incidental, exemplary, or consequential damages arising out of or related to the use of the Data, however caused, regardless of theory of liability, and whether or not QUADICA DEVELOPMENTS INC. has been advised of the possibility of such damage. This limitation shall apply notwithstanding any failure of essential purpose or any exclusive remedy.